

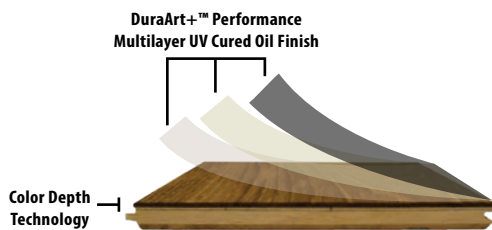
SPECIES:	AUTHENTIC FRENCH WHITE OAK
AVAILABLE WIDTHS:	5", 7", 10" AND 14"
AVAILABLE PATTERNS:	CHEVRON AND HERRINGBONE
AVAILABLE THICKNESSES:	5/8" AND 3/4"
LENGTH DESCRIPTION:	SEE ARTISTRY XL PLANKS DIAGRAM
FINISH:	DURAART+™ PERFORMANCE MULTILAYER UV CURED OIL
TEXTURE:	LIGHT WIRE BRUSH
GRADE:	PLAIN SAWN - CHARACTER RIFT & QUARTERED - SELECT - AB
CONSTRUCTION:	SAWNPLY+™ 4 LAYER BALANCED SOLID HARDWOOD <ul style="list-style-type: none"> <li>• 3/4" THICK: 5MM SAWNPLY+™ WEAR AND BACK LAYER</li> <li>• 5/8" THICK: 3MM SAWNPLY+™ WEAR AND BACK LAYER</li> <li>• 1MM HARDWOOD STABILIZATION LAYER</li> <li>• 8MM HARDWOOD CORE SLATS</li> </ul>
INDOOR AIR QUALITY:	FLOORSCORE-CERTIFIED FOR SUPERIOR INDOOR AIR QUALITY
ECOSMART:	PEFC CERTIFIED MANUFACTURER (WWW.PEFC.ORG)
FINISH WARRANTY:	LIFETIME RESIDENTIAL & 3 YEAR COMMERCIAL (SEE WARRANTY FOR DETAILS)
STRUCTURE WARRANTY:	LIFETIME (SEE WARRANTY FOR DETAILS)
INSTALLATION:	NAIL, STAPLE, GLUE DOWN, AND FLOAT (SEE INSTALLATION GUIDE)
RADIANT HEAT:	YES

EXPECT TO SEE VARIATIONS IN COLOR, GRAIN, CHARACTER (INCLUDING KNOTS), & BLACK FILL FROM PLANK TO PLANK AND SAMPLE TO SAMPLE.



## DuraArt+™ Performance Multilayer UV Cured Oil Finish

- Multilayer UV Oil coating for added performances
- Natural look and feel with high definition clarity
- Zero VOC - FloorScore Certified
- Does NOT require topcoat after installation
- Greater stain resistance vs. hardwax and penetrating oils
- Higher performance durability than penetrating or hard wax oils
- Superior repair-ability vs urethane floors

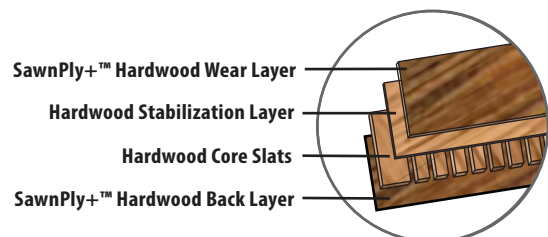


## Color Depth Technology

- Color permeates through Sawnply wear layer stopping surface scratches from exposing light wood underneath the finish.
- Offers increased hardness and stability.

## SawnPly+™ Solid-Balanced Construction

- 100% pure hardwood construction- no plywood containing excessive glues
- More stable than plywood cores in all climates
- Solid hardwood core slats offer unsurpassed stability to control expansion and contraction
- Matching hardwood wear layer and back layer perfectly balance the product, keeping the surface flat and eliminate cupping



**WHAT IS MICROBAN?**

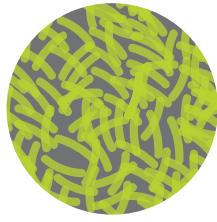
- Microban® is the global leader in antimicrobial and odor protection.
- Microban® technology inhibits the growth of bacteria, mold and mildew on household products, keeping your home cleaner and reducing odors.

**HOW IT WORKS**

- Microban® odor-control and antimicrobial agents are integrated into the surface of Rhone Flooring during the manufacturing process.
- This patented technology never washes off or wears away and stays active for the life of the product.
- Microban® antimicrobial agents prevent stain-and-odor-causing microbes from growing or reproducing. On an unprotected flooring surface, bacteria can double in numbers every 20 minutes.
- By inhibiting the growth of bacteria, mold and mildew, Microban® technology keeps your floor cleaner between cleanings.
- Microban® technology helps reduce odors caused by pet urine on Rhone hardwood.



WITH MICROBAN®  
24 HOUR SIMULATION



WITHOUT MICROBAN®  
24 HOUR SIMULATION



FOR MORE INFORMATION ABOUT  
MICROBAN® VISIT US AT  
[RHONEFLOORING.COM/MICROBAN](http://RHONEFLOORING.COM/MICROBAN)

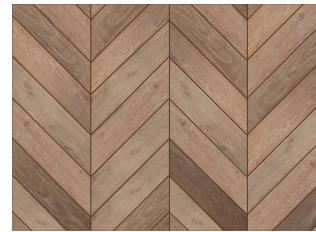


## Platform Options

This product is designed and hand finished in Los Angeles, CA. These handcrafted colors require up to 6 individual steps to achieve the beautiful multiple layered finish.

### PATTERNS AVAILABLE

This color is available in these coordinating patterns



**CHEVRON PATTERN**  
5/8" x 5" x 25"



**HERRINGBONE PATTERN**  
5/8" x 5" x 20"  
5/8" x 7" x 28"

## Rhone XL Planks

Rhone Hardwood offers the longest average length plank in the industry.

In each carton of Rhone Hardwood flooring, at least 50% of the square footage will be represented as full-length planks (see diagram below).

Most other products in the industry will use the language "up to" but never specify how many of the long planks are provided in each carton. Longer planks provide greater visual continuity to your space and show the true unique beauty of mother nature.

LENGTH DESCRIPTION (RANDOM - 15')

The diagram represents potential variations in color, grain and character of one full carton of material.

3/4" Thick x 14"  
2 ROWS PER BOX



PLAIN SAWN

LENGTH DESCRIPTION (23" - 10')

The diagram represents potential variations in color, grain and character of one full carton of material.

3/4" Thick x 7"  
3/4" Thick x 10"  
4 ROWS PER BOX



PLAIN SAWN

LENGTH DESCRIPTION (23" - 86")

The diagram represents potential variations in color, grain and character of one full carton of material.

5/8" Thick x 7"  
5 ROWS PER BOX



PLAIN SAWN OR SELECT

LENGTH DESCRIPTION (23" - 86")

The diagram represents potential variations in color, grain and character of one full carton of material.

5/8" Thick x 5"  
5 ROWS PER BOX



RIFT & QUARTERED

