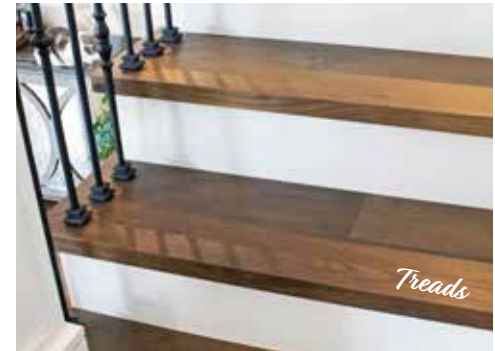


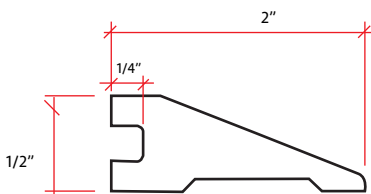
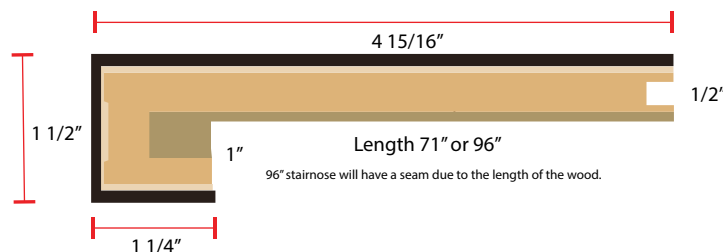
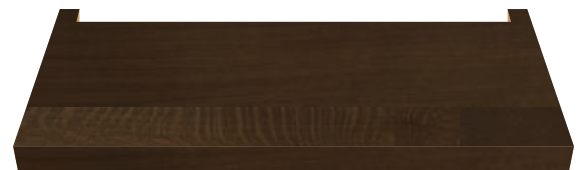


Stairs deserve the same attention to detail and design as your wood flooring. Poor tread construction and color match can cheapen the look of your high end floors. Our fabricated nosing and treads are made with the exact same material as your floor and guarantees the best match possible. The square edge detail on our treads is consistent with current design trends.

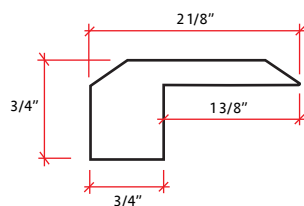


**NOTE:** There may be a seam present on the Fabricated Stair Nose Edge.

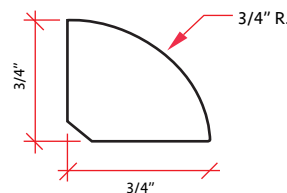
- Offered in Left, Right, Wall-to-Wall, and Open Face returns that come in a 1 1/2" x 1 1/4" width and depth.
- Made from the same material as our floors and can be color matched to your specific choice.
- Square nosing offers a contemporary look and feel.
- We can manufacture our treads in our standard 4 1/4" up to 6".



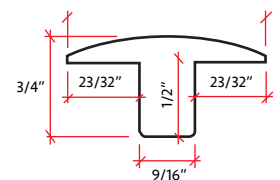
**Reducer 78" in Length**



**Threshold 78" in Length**



**Quarter Round 96" in Length**



**T-Molding 78" in Length**



COMPLETE DETAILS FOR THIS COLLECTION AVAILABLE AT  
[www.RhoneFlooring.com](http://www.RhoneFlooring.com)



Certifies flooring and the materials they're made with are in compliance with stringent indoor air quality emissions.